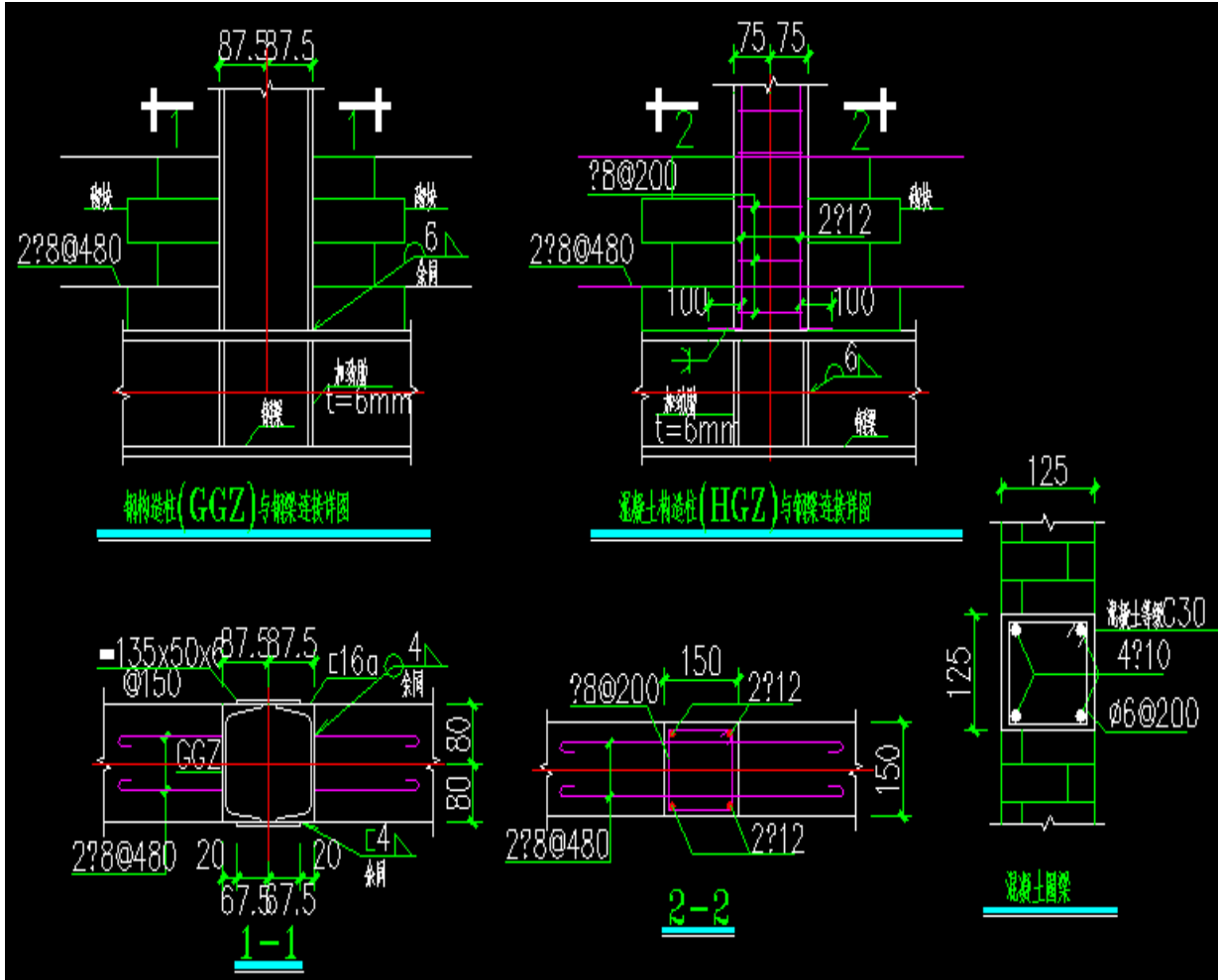
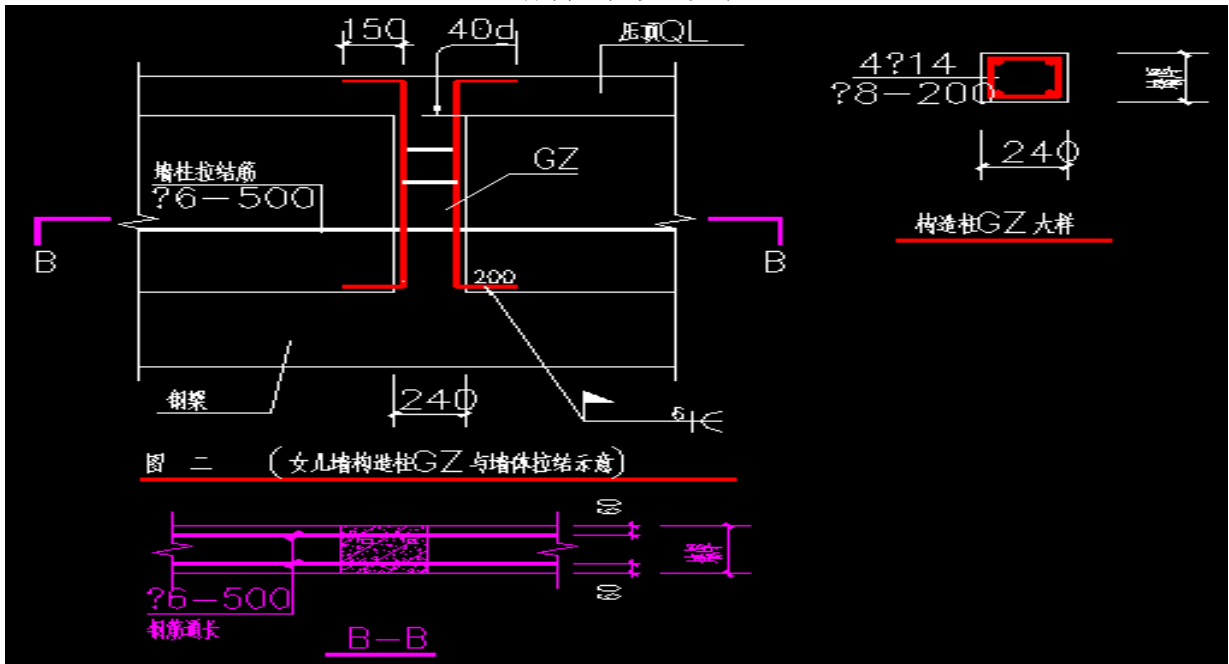


常州市武进人民医院医疗中转房项目

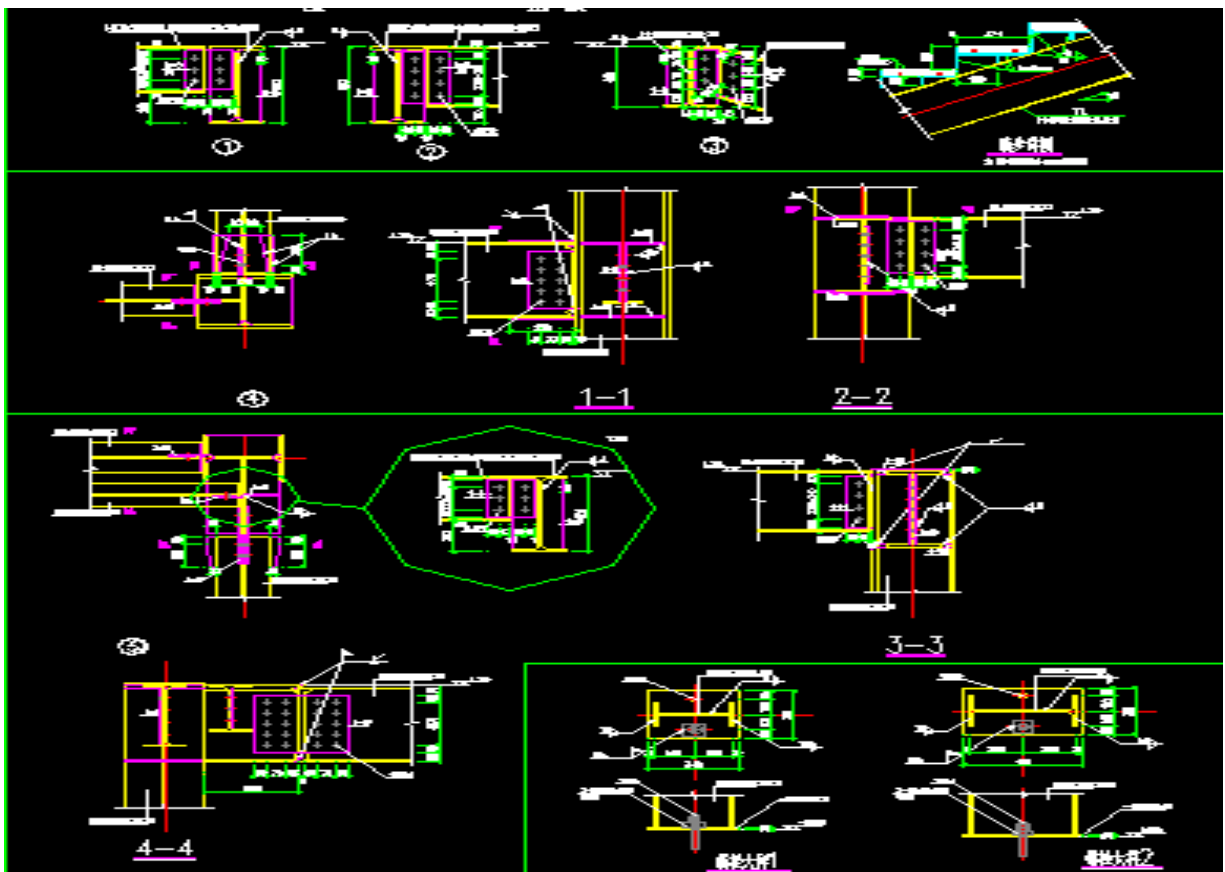
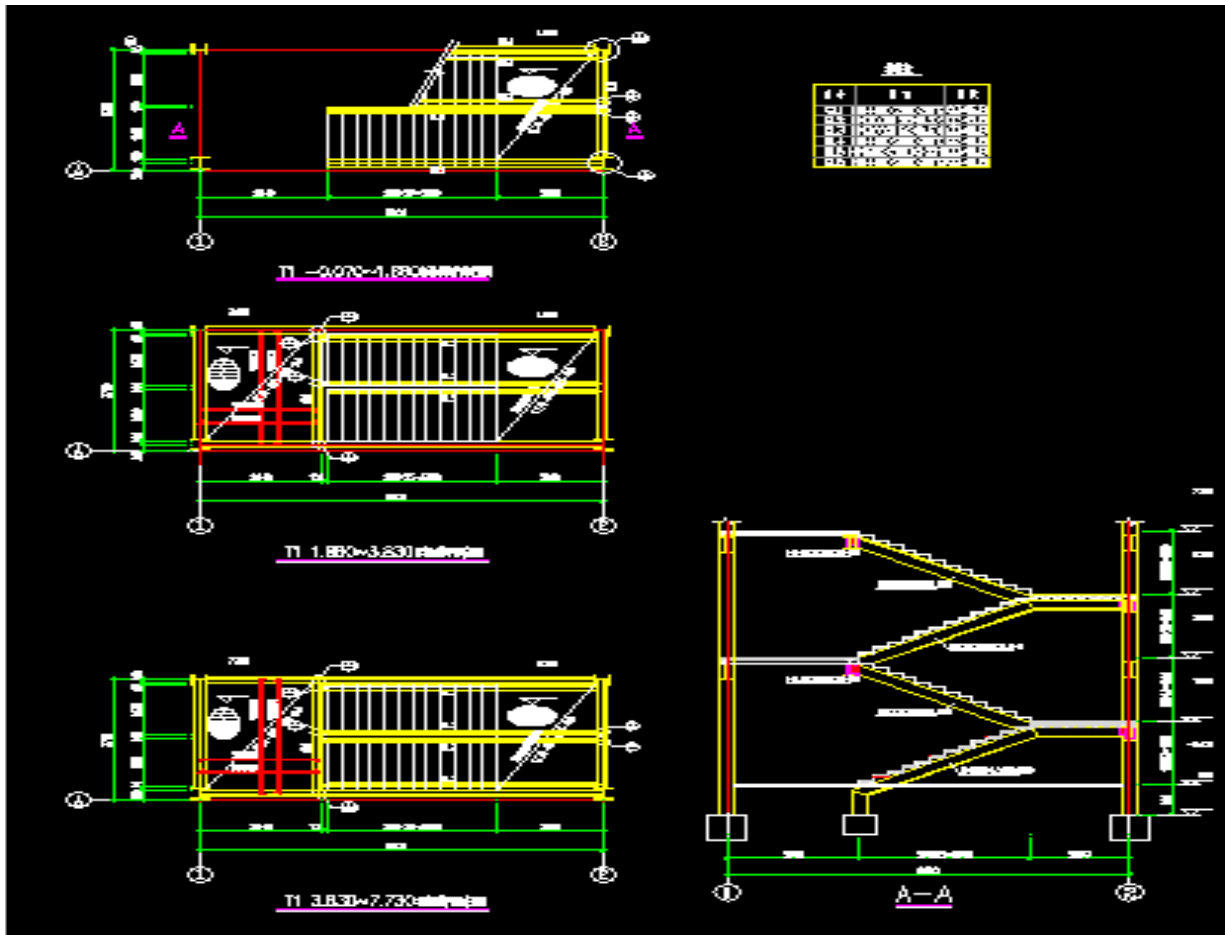
一、设计情况



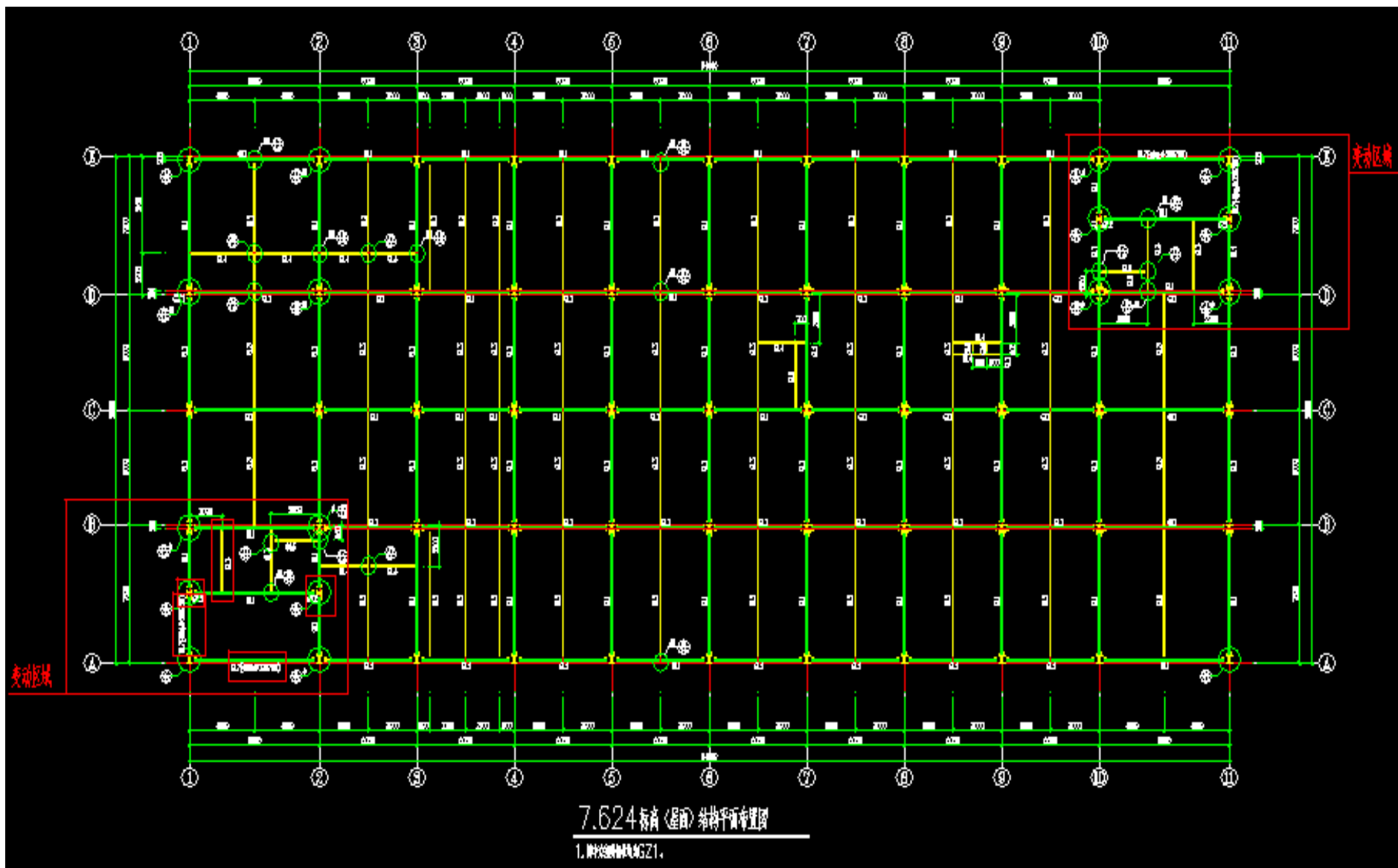
墙体构造柱设置要求



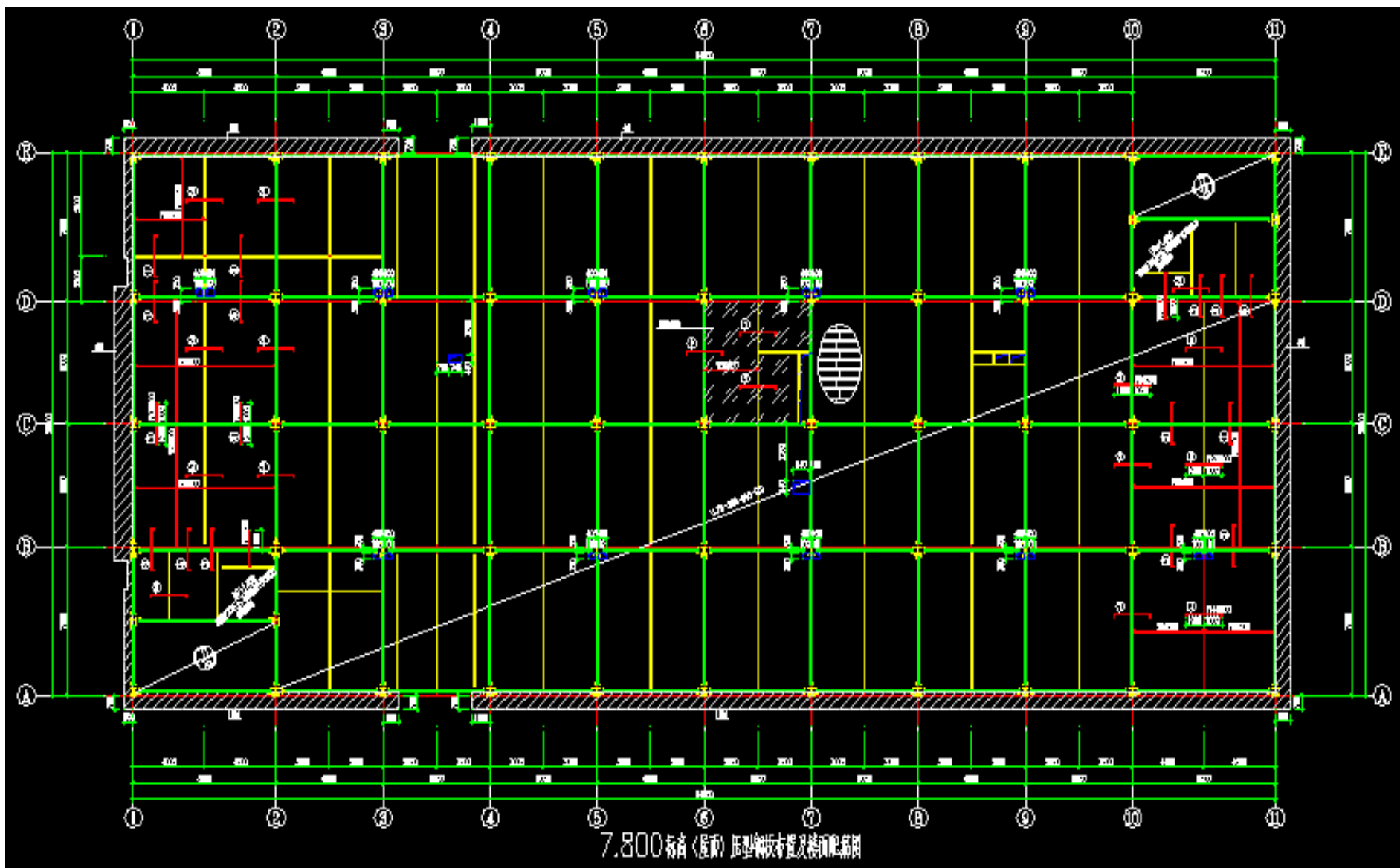
屋面构造柱设置要求



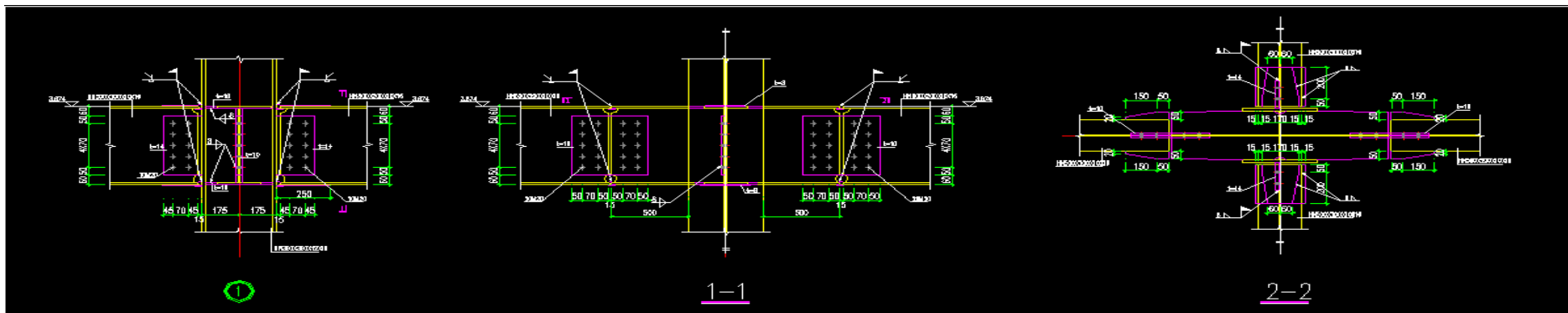
钢结构楼梯(平面图和节点图)



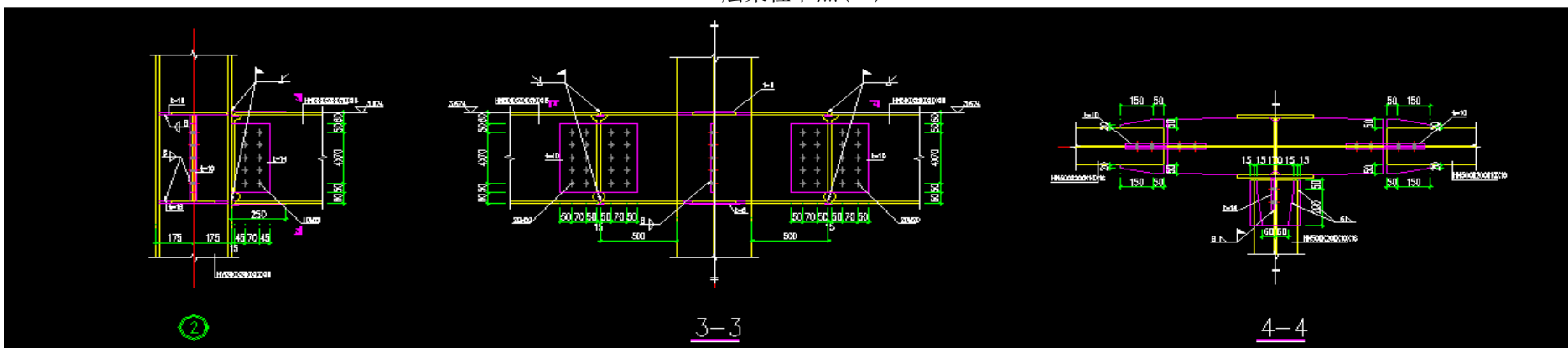
屋面结构布置平面图



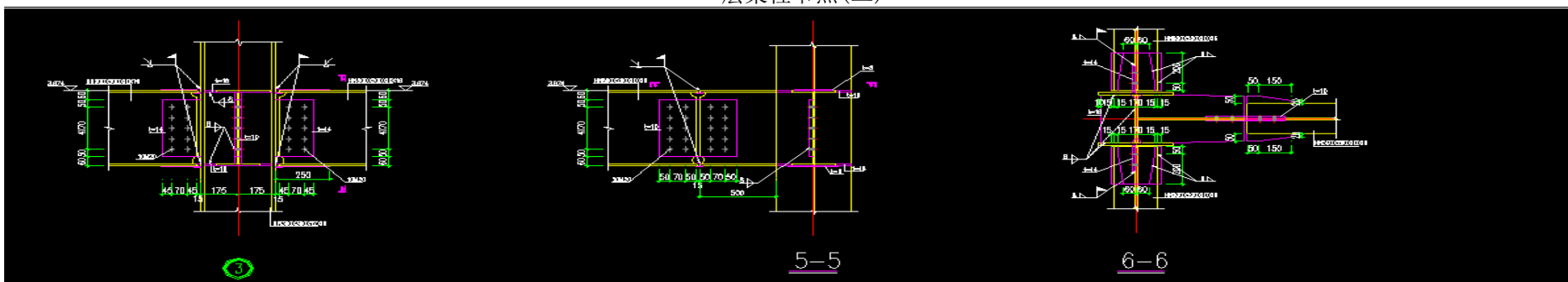
屋面压型钢板布置及楼面配筋图



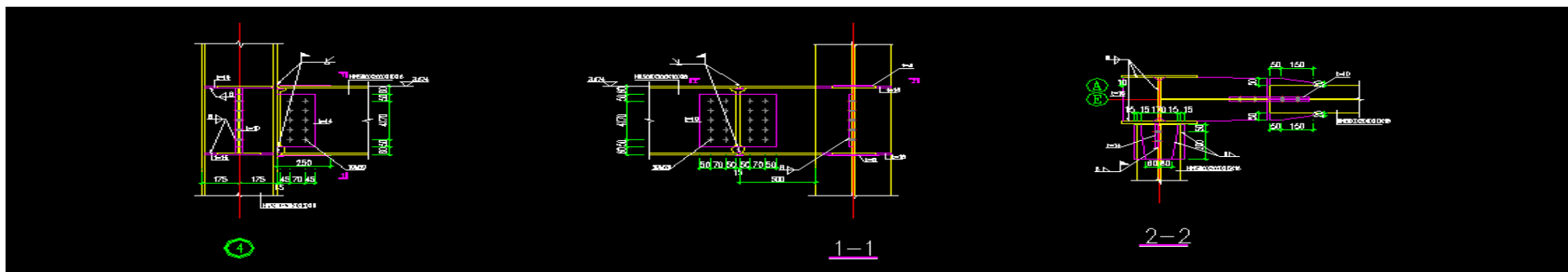
一层梁柱节点(一)



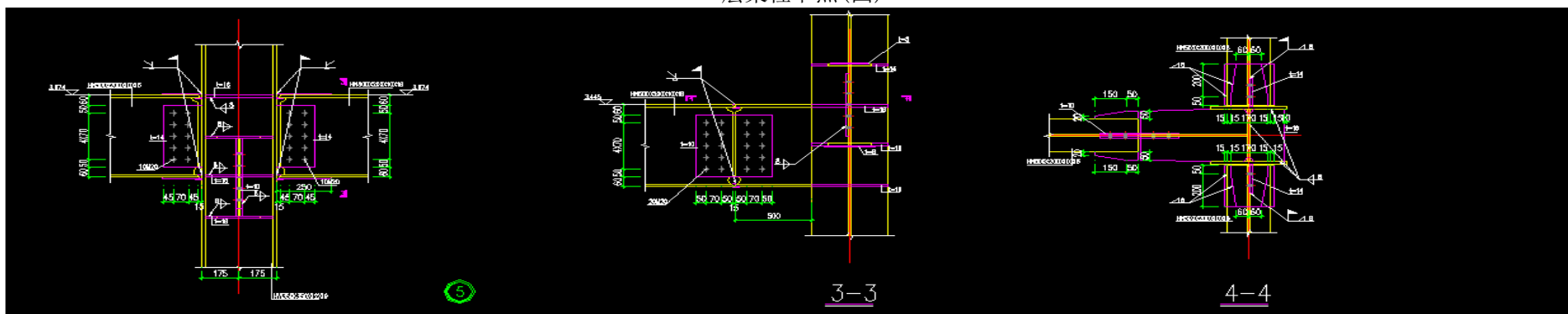
一层梁柱节点(二)



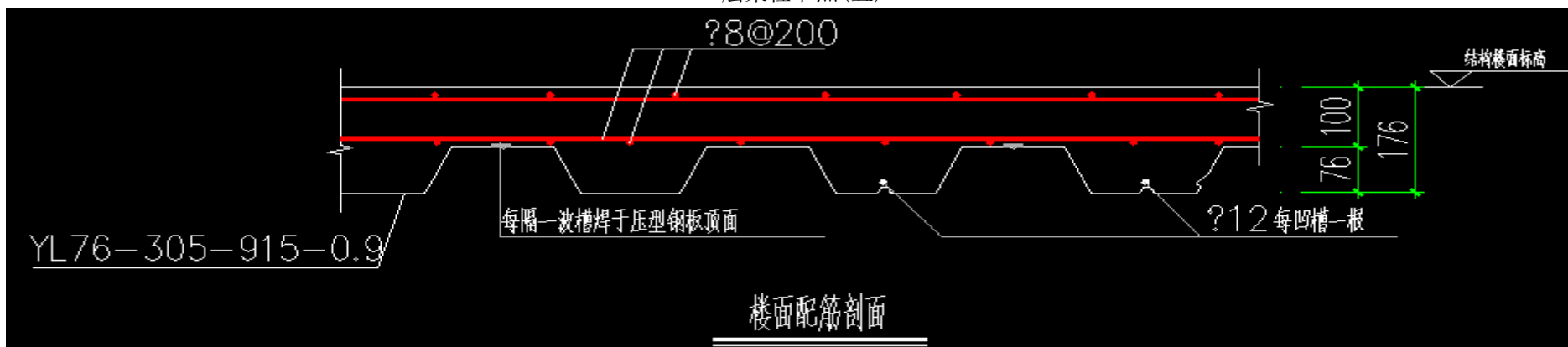
一层梁柱节点(三)



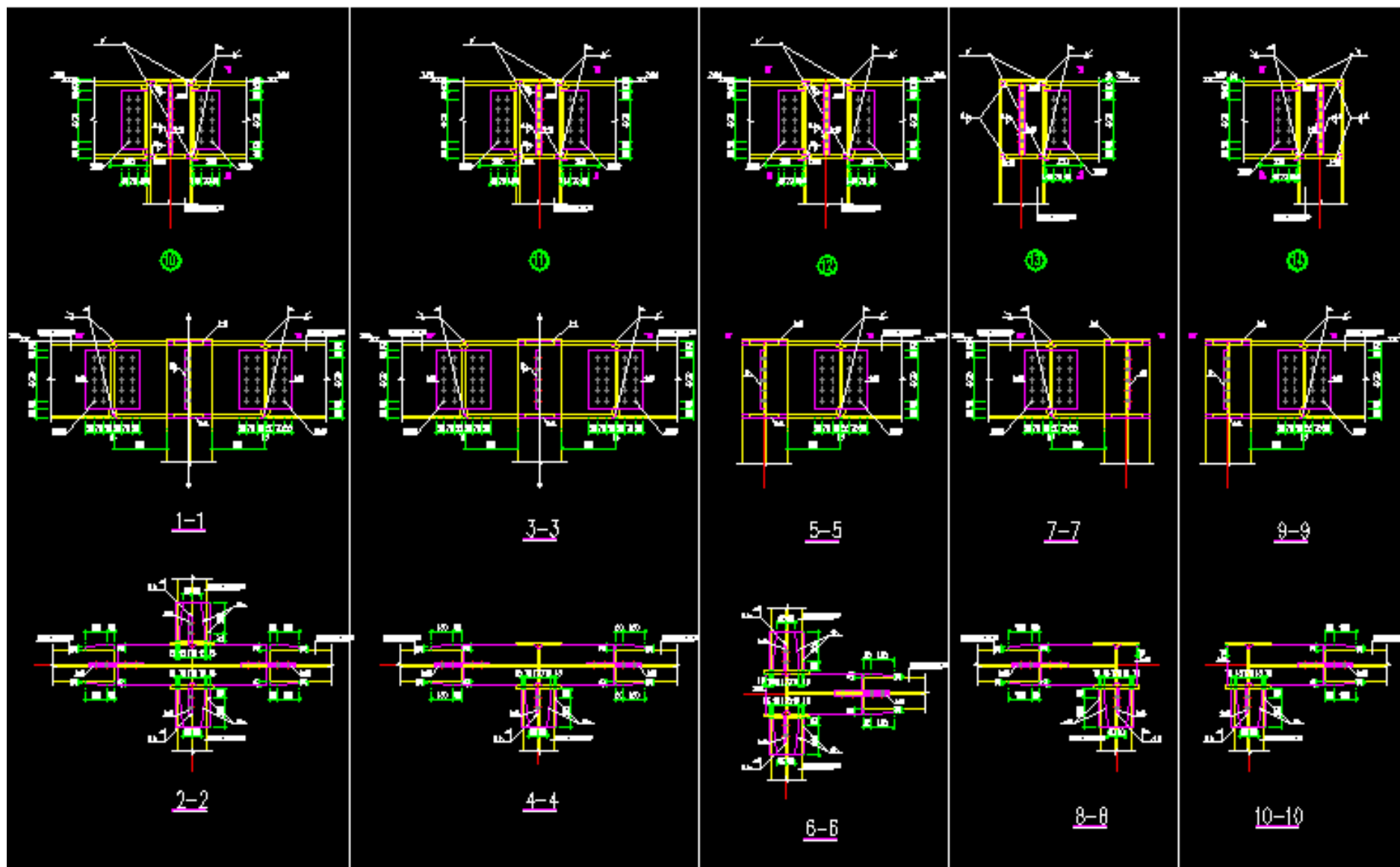
一层梁柱节点(四)



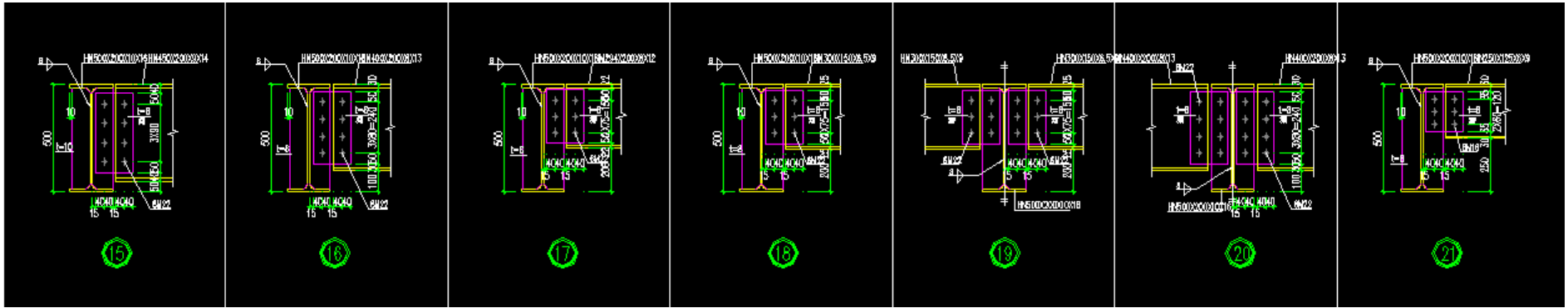
一层梁柱节点(五)



楼面配筋剖面图



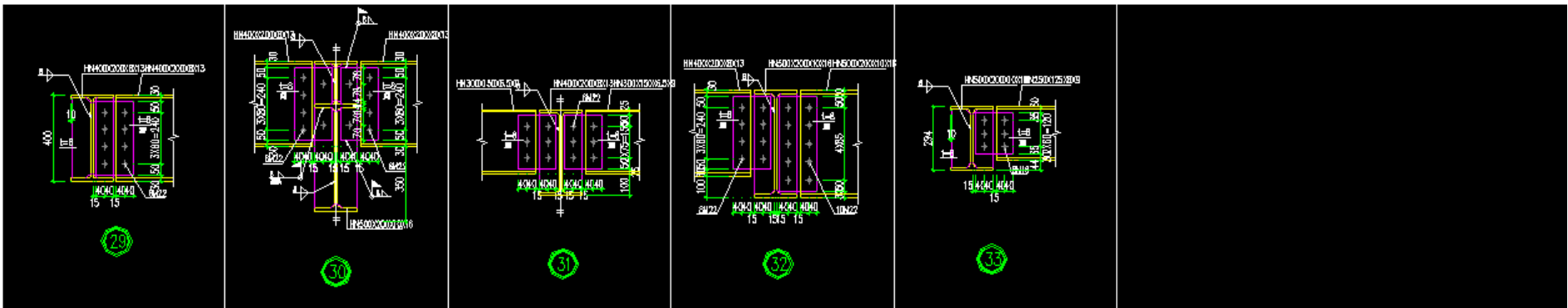
屋面层梁柱节点



主次梁节点(一)



主次梁节点(二)



主次梁节点(三)

二、施工情况



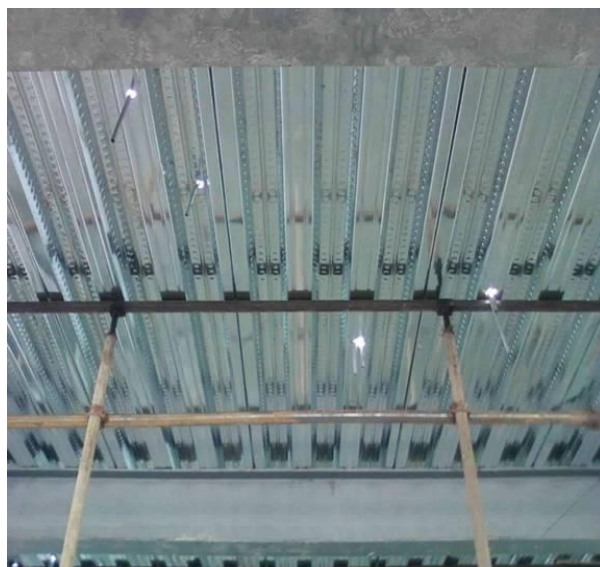
钢柱和钢梁节点(一)



钢柱和钢梁节点(二)



热镀锌钢楼承板底面(一)



热镀锌钢楼承板底面(二)



热镀锌钢楼承板顶面(一)



热镀锌钢楼承板顶面(二)



热镀锌钢楼承板顶面钢梁部位(一)



热镀锌钢楼承板顶面钢梁部位(二)



热镀锌钢楼承板顶面边沿部位(一)



热镀锌钢楼承板顶面悬挑部位(二)



钢结构钢柱钢梁吊装后(共二层)



吊装后二层热镀锌钢承板铺装